

GRUA TORRE TOWER CRANE

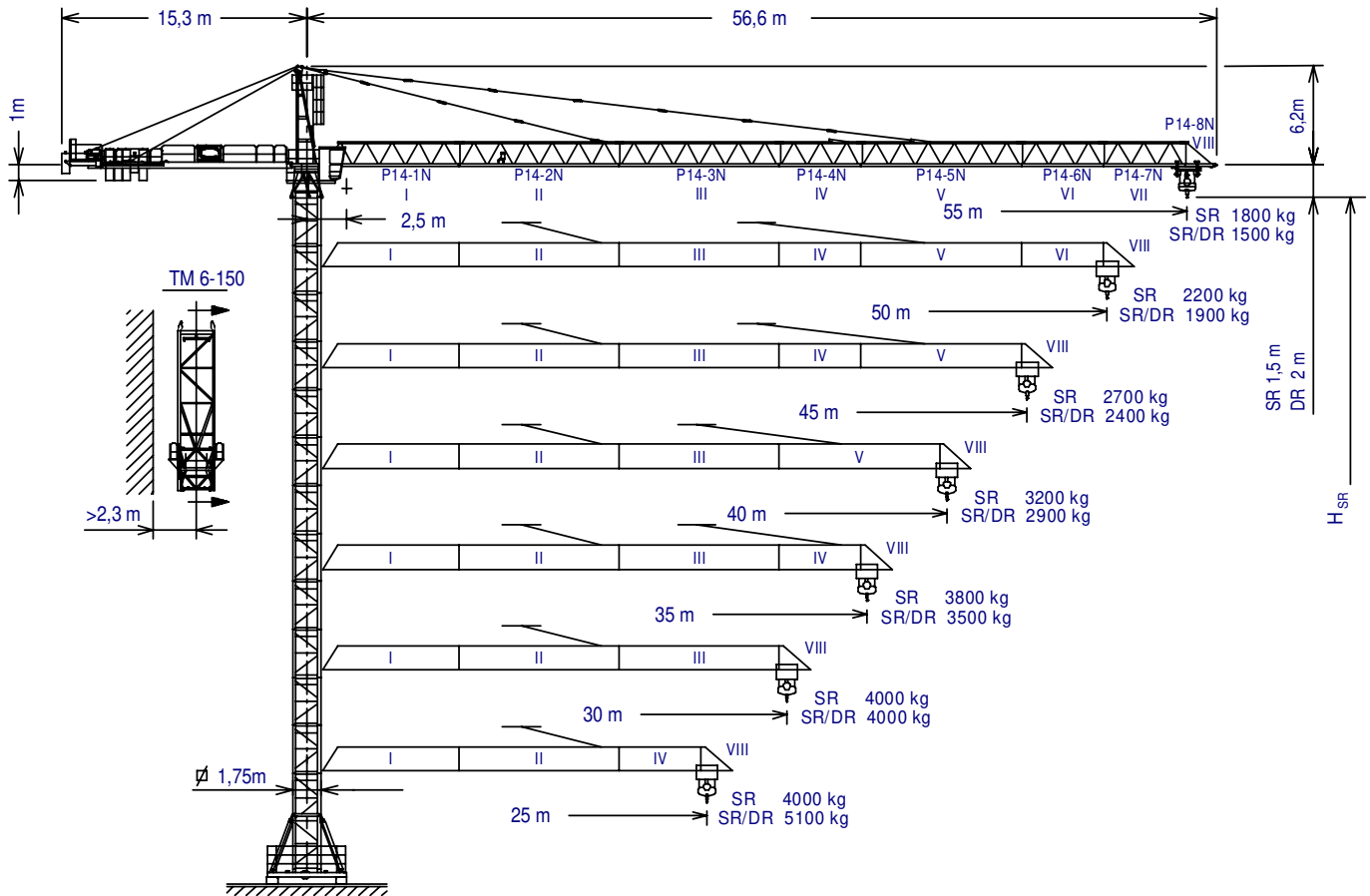
J110N



EN 14439
C25

SISTEMA DE CALIDAD CERTIFICADO SEGUN
QUALITY ASSURANCE SYSTEM CERTIFIED ACCORDING TO

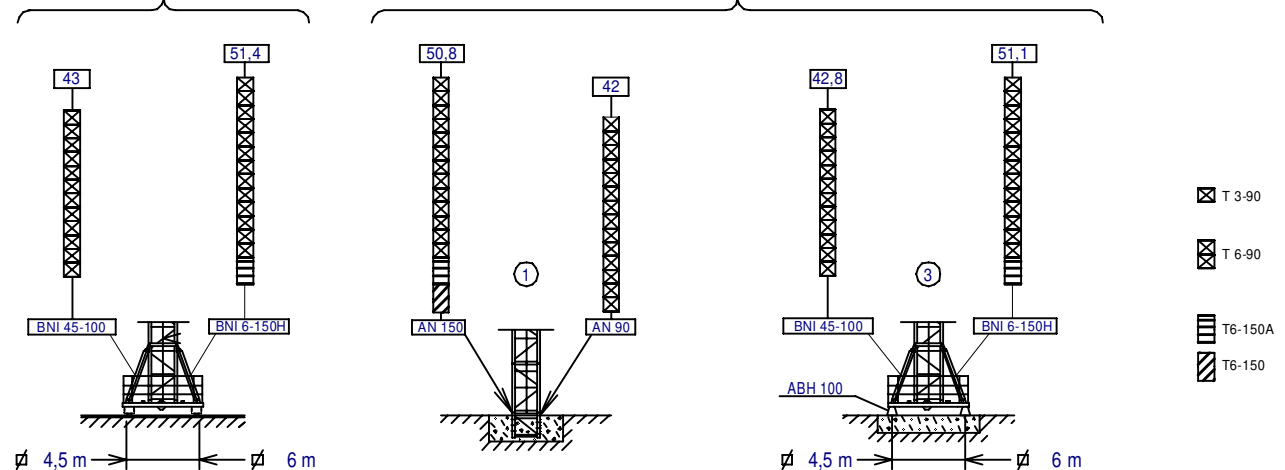
UNE-EN-ISO 9001



$H_{DR} = H_{SR} - 0,5$	TM 6-150 ----- 161.35.700	ABH 100 ----- 201.23.000
$H_{SR} =$ Altura máxima bajo gancho sin arriostrar (m) Maximum height under hook without fastening (m)	T3-90 ----- 133.32.000	P14-1N ----- 145.40.000
	T6-90 ----- 133.31.000	P14-2N ----- 145.41.500
	TI-6-90 ----- 133.30.000	P14-3N ----- 145.42.000
	T6-150 ----- 161.31.000	P14-4N ----- 145.43.000
	T6 ----- 161.31.300	P14-5N ----- 145.44.000
	AN 90 ----- 133.21.000	P14-6N ----- 145.45.000
	AN 150 ----- 161.21.000	P14-7N ----- 145.46.000
	BNI 45-100 ----- 145.20.500	P14-8N ----- 145.47.500
	BNI 6-150H ----- 161.20.300	

(H_{SR}) TRASLACION / TRAVELLING

(H_{SR}) ESTACIONARIA / STATIONARY



Viento fuera de servicio / Out of service wind: FEM 1005 - C25



JASO EQUIPOS DE OBRAS Y CONSTRUCCIONES, S.L.

Fecha / Date: 04-10-2012 - Reservado el derecho a modificaciones sin previo aviso / Subject to modification, without previous warning







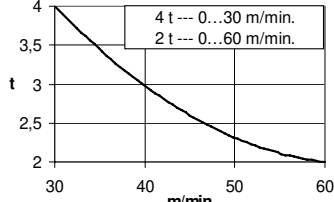
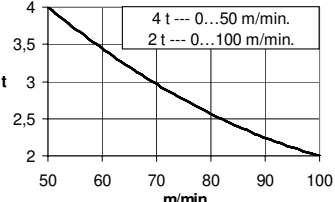

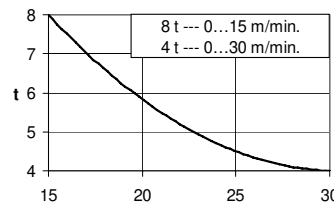
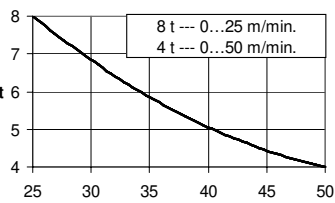
Declinamos toda responsabilidad derivada de la información proporcionada / This information is supplied without liability

SR (kg)		Cargas máximas / Maximum loads SR 4000						4000 kg @
PLUMA JIB	Alcance del gancho (m) / Hook reach (m)							
	55	50	45	40	35	30	25	
55 m	1800	2025	2300	2640	3080	3665	4000	27,7 m
50 m	—	2200	2495	2860	3330	3960	4000	29,7 m
45 m	—	—	2700	3090	3595	4000	4000	31,8 m
40 m	—	—	—	3200	3720	4000	4000	32,8 m
35 m	—	—	—	—	3800	4000	4000	33,4 m
30 m	—	—	—	—	—	4000	4000	30 m
25 m	—	—	—	—	—	—	4000	25 m

SR / DR (kg)		Cargas máximas / Maximum loads SR/DR - 4000/8000								4000/8000 kg @
PLUMA JIB	Alcance del gancho (m) / Hook reach (m)									
	55	50	45	40	35	30	25	20	15	
55 m	1500	1715	1980	2305	2730	3290	4000/4080	4000/5260	4000/7235	25,4/13,7 m
50 m	—	1900	2185	2540	2990	3600	4000/4450	4000/5725	4000/7850	27,4/14,7 m
45 m	—	—	2400	2780	3270	3925	4000/4840	4000/6210	4000/8000	29,5/15,8 m
40 m	—	—	—	2900	3405	4000/4085	4000/5030	4000/6450	4000/8000	30,5/16,4 m
35 m	—	—	—	—	3500	4000/4190	4000/5160	4000/6615	4000/8000	31,2/16,8 m
30 m	—	—	—	—	—	4000	4000/4930	4000/6325	4000/8000	30/16,1 m
25 m	—	—	—	—	—	—	4000/5100	4000/6540	4000/8000	25/16,6 m

**CARACTERISTICAS DE MECANISMOS
MECHANISMS FEATURES**

Mecanismos sin VF: Para 480V Potencias y velocidades: 20% más
Mechanisms without VF: For 60Hz Powers and speeds: 20% more

*opcional *optional							
	EC3360VF	*EC4880	*EC60100VF	TG1125VF	OG1508VF	TC465VF	TH1210
 t m/min		2 4 4 80 40 10		0...25 m/min	0...0,16 0,16...0,4 0,4...0,8 r/min	0...15 15...32 32...65 m/min	1 m/min
 t m/min		4 8 8 40 20 5					
kW	24,3	35,3	44,1	2 x 4	2 x 5,5	3	9,2
Máx. recor. gancho Maximum hook course	SR 322 m DR 161 m	SR 534 m DR 267 m		Potencia necesaria con (estacionaria): Power required with (stationary): EC3360VF = 38,3 kW EC4880 = 51,3 kW EC60100VF = 58,1 kW			

Importante: A medida que la altura bajo gancho aumenta, disminuye la capacidad de carga de la grúa. Parar alturas superiores a la autoestable consultar a JASO EQUIPOS DE OBRAS Y CNES, S.L.

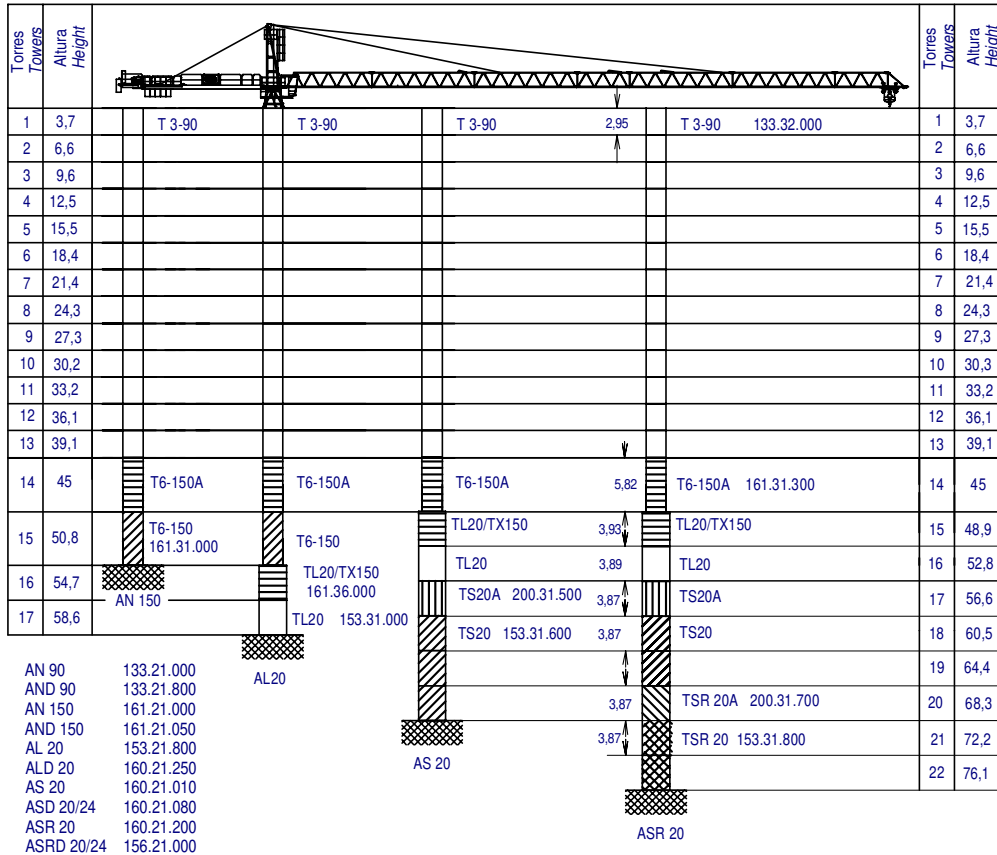
Important: When the height under hook increases, the hoisting load will decrease. If the height under hook is higher than the free standing height, consult to JASO EQUIPOS DE OBRAS Y CNES, S.L.



DENOMINACION / DENOMINATION		L (m)	A (m)	H (m)	P / W (kg)
Torre <i>Tower section</i>	T3-90	3,190	1,818	1,818	1200
	T6-90	6,140	1,818	1,818	2250
	T16-90	6,136	2,095	2,095	2500
	T6-150A	6,175	1,870	1,870	2760
	T6-150	6,175	1,870	1,870	2760
	T16-150	6,175	2,190	2,190	3535
Torre asiento de pista. Base punta de torre y orientación <i>Slewing table, Tower head base and Slewing mechanism</i>		3,390	2,060	2,150	3700
Punta de torre <i>Tower head</i>		6,090	1,915	1,930	1700
Conjunto asiento pista + punta torre + orientación <i>Slewing table assembly + tower head + slewing mechanism</i>		8,370	2,615	2,720	5400
Tramo de pluma <i>Jib section</i>	P14-1N (I)	8,665	1,366	1,698	1040
	P14-2N (II)	10,160	1,226	1,630	1270
	P14-3N (III)	10,160	1,226	1,630	840
	P14-4N (IV)	5,270	1,226	1,630	495
	P14-5N (V)	10,160	1,226	1,630	695
	P14-6N (VI)	5,260	1,226	1,550	325
	P14-7N (VII)	5,270	1,226	1,545	295
	P14-8N (VIII)	2,095	1,366	1,740	230
Polipasto <i>Hook assembly</i>	SR	0,990	0,200	1,067	214
	DR	1,040	0,200	1,725	347
Tirante sostén pluma <i>Jib support tie</i>	Largo / Long	5,30	0,70	1,750	650
	Corto / Short	4,90	0,445	1,750	450
Carro <i>Crab</i>	SR	2,005	1,665	1,525	225
	DR	2,070	1,775	1,550	335
Contrapluma con plataformas <i>Counterjib with platforms</i>		11,950	1,490	0,709	2495
Soporte y elevación <i>Support and hoisting</i>	EC3360VF	2,655	2,315	1,750	2160
	EC4880	2,655	2,315	1,750	2480
	EC60100VF	2,655	2,315	1,750	2625
Plataforma y cabina <i>Platform and cabin</i>		3,760	1,650	2,340	820
Contrapeso <i>Counterweight</i>	Grande / Big	1,080	0,500	2,025	2360
	Pequeño / Small	1,080	0,500	1,305	1500
Lastre <i>Ballast</i>		3,800	0,580	1,500	6000
Estructura torre de montaje <i>Jacking cage structure</i>		10,320	2,420	2,310	3500

LASTRES INFERIORES / LOWER BALLASTS		Para alturas intermedias tomar el lastre correspondiente a la altura superior <i>For intermediate heights take the ballast corresponding to the higher height</i>			
Viento fuera de servicio / Out of service wind: FEM 1005-C25					
BNI 45-100	Altura bajo gancho (m) / Height under hook (m)	19,5	31,3	37,2	43
Peso de lastre (t) / Ballast block weight (t)		36	48	60	72
BNI 6-150H	Altura bajo gancho (m) / Height under hook (m)	25	36,8	42,7	51,4
Peso de lastre (t) / Ballast block weight (t)		LI=12t	LI+24	LI+36	LI+48





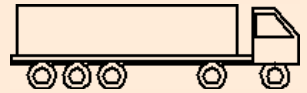
Viento fuera de servicio / Out of service wind: FEM 1005 - C25

Para otras configuraciones de torre, consultar.
For other tower configurations, consult

Transporte grúa de 43 m bajo gancho con traslación, cabina y sin lastre

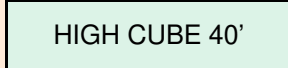
43 m under hook crane transport with travelling base, cabin and without base ballast

En camiones / In trucks



6 unidades / 6 units

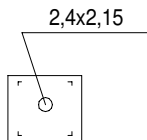
En contenedores / In containers



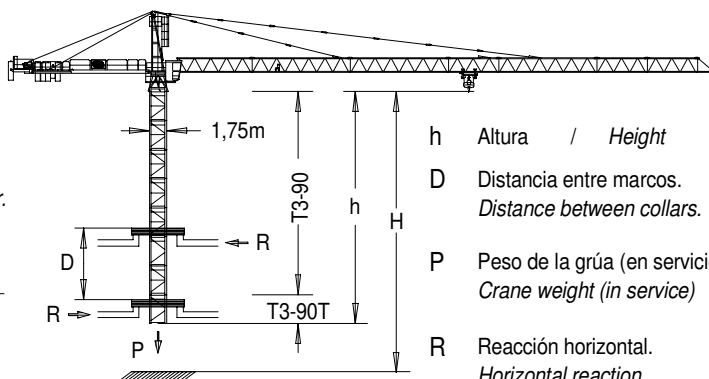
6 unidades / 6 units

Hueco mínimo.

Useful area around the opening in the floor.



T3-90T = 139.32.500 T3-90 = 133.32.000



h Altura / Height

D Distancia entre marcos.
Distance between collars.

P Peso de la grúa (en servicio).
Crane weight (in service)

R Reacción horizontal.
Horizontal reaction.

H < 250 m

Para reacciones de trepado interno, consultar.
For internal climbing reactions, consult.

Viento fuera de servicio / Out of service wind: FEM 1005 - C25

h_{max} : T3-90T + 11xT3-90

	En servicio / In service	Fuera de servicio / Out of service
h (m)		36,1
D (m)		15,3-17
P (kN)	600	520
R _{max} (kN)	105	205



JASO EQUIPOS DE OBRAS Y CONSTRUCCIONES, S.L.

DELEGACION / DELEGATION

Fecha / Date: 04-10-2012

Ctra./Rd. Madrid - Irún Km. 415
20.213 IDIAZABAL [Gipuzkoa]
ESPAÑA / SPAIN
P.O. Box, 23 - 20.200 BEASAIN

Tel. +34 943 - 18 70 00
Fax. +34 943 - 18 70 20
E-mail: jaso@jaso.com
http://www.jaso.com



Neutronweg 4, 1627 LG Hoorn
The Netherlands
+31 (0) 229 21 2642
Info@tekakranen.nl